

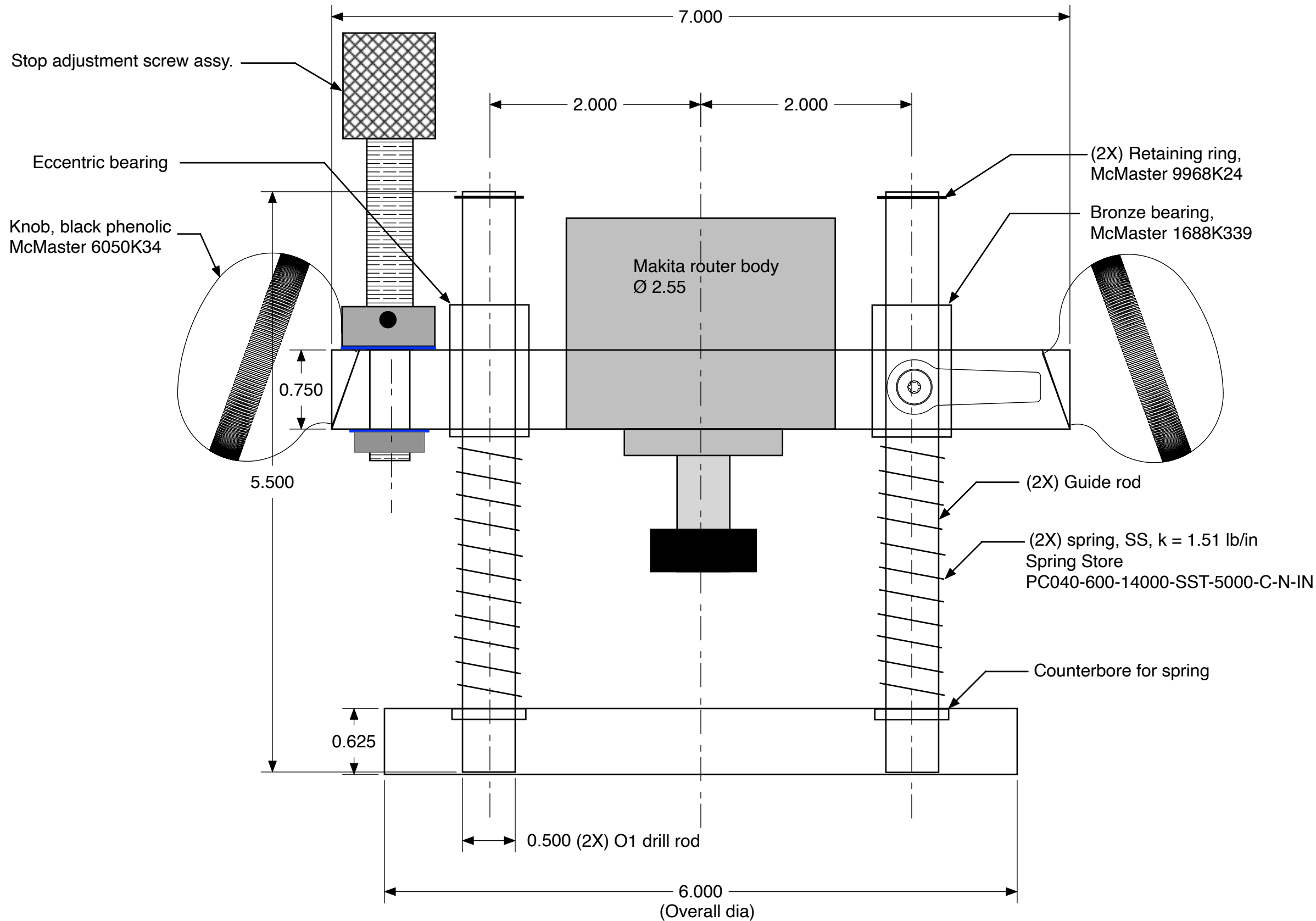
# Mini Router Plunge Base

## Drawing Package

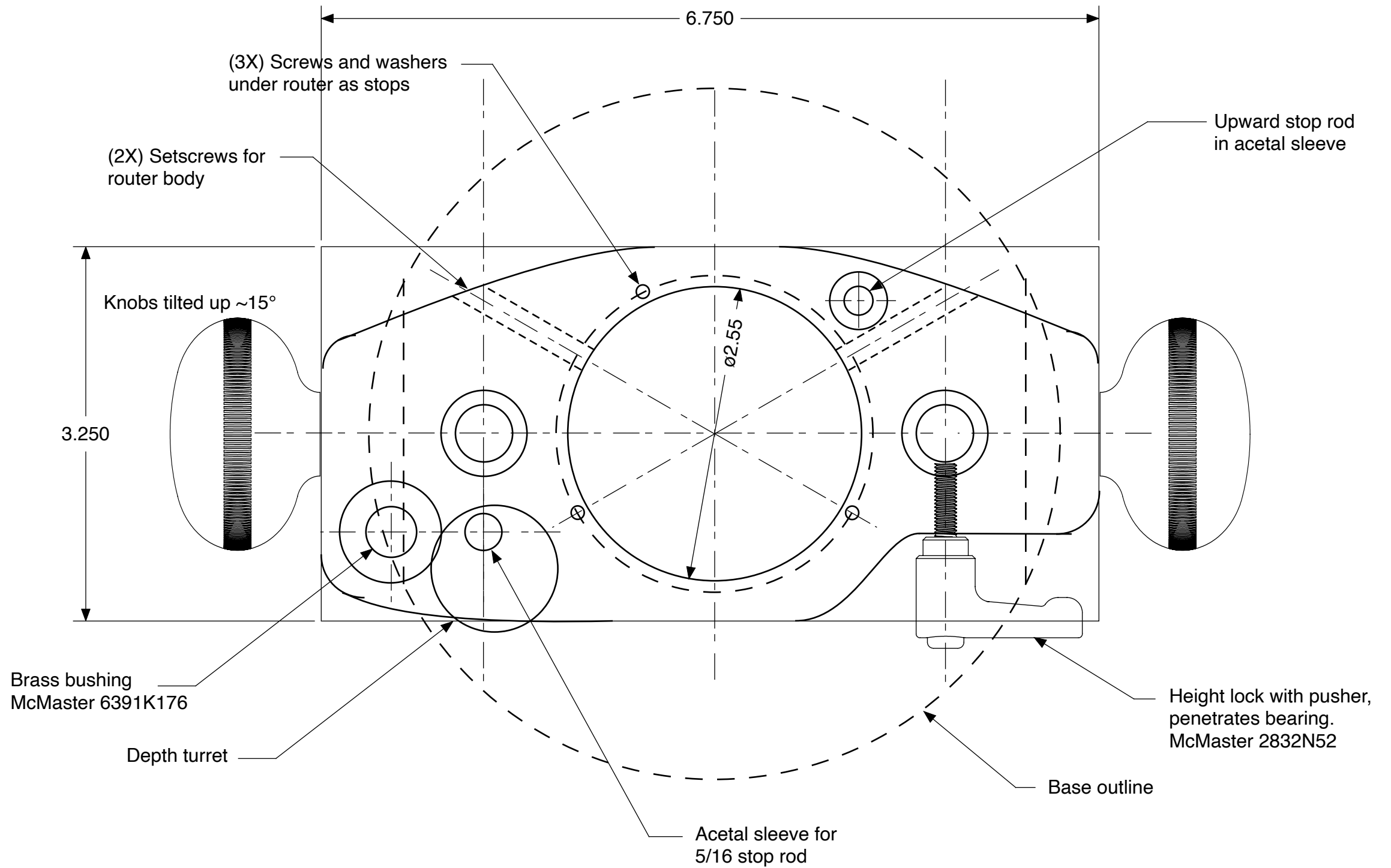
Gary W. Johnson

April, 2025

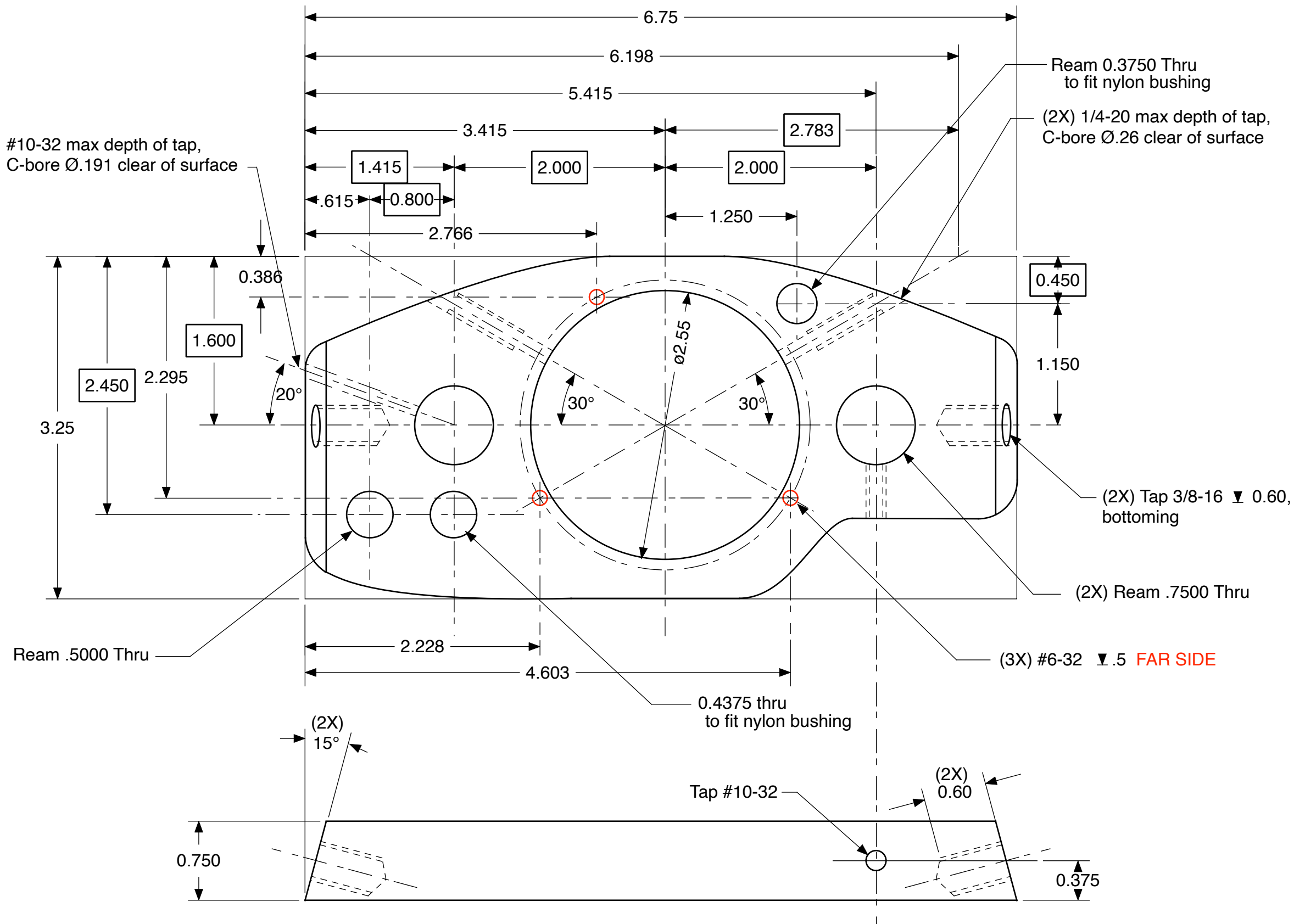




**Mini Plunge Router Base**  
**General Elevation**  
**GWJ 3-30-25**

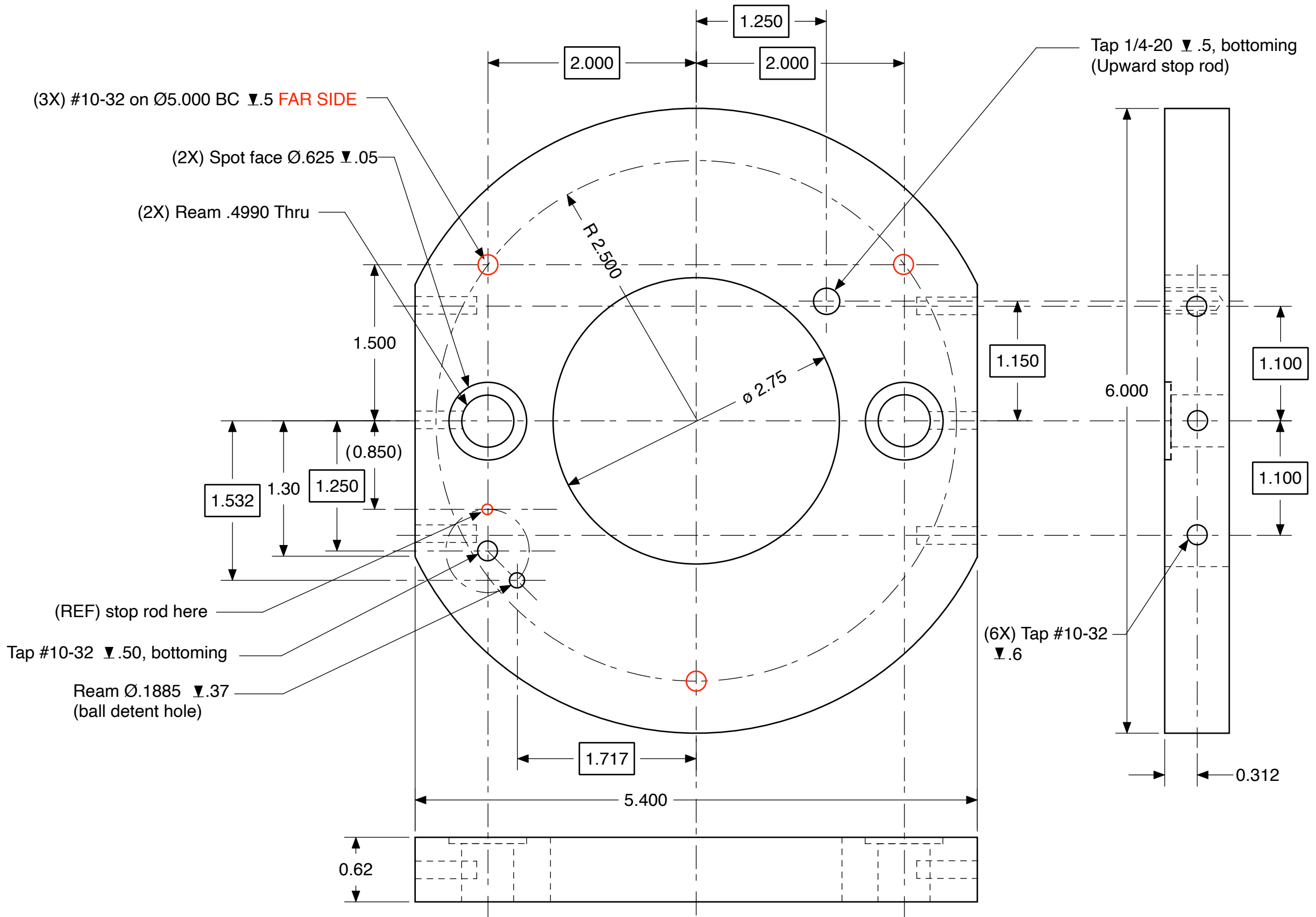


**Mini Plunge Router Base**  
**General Top View**  
**GWJ 3-30-25**



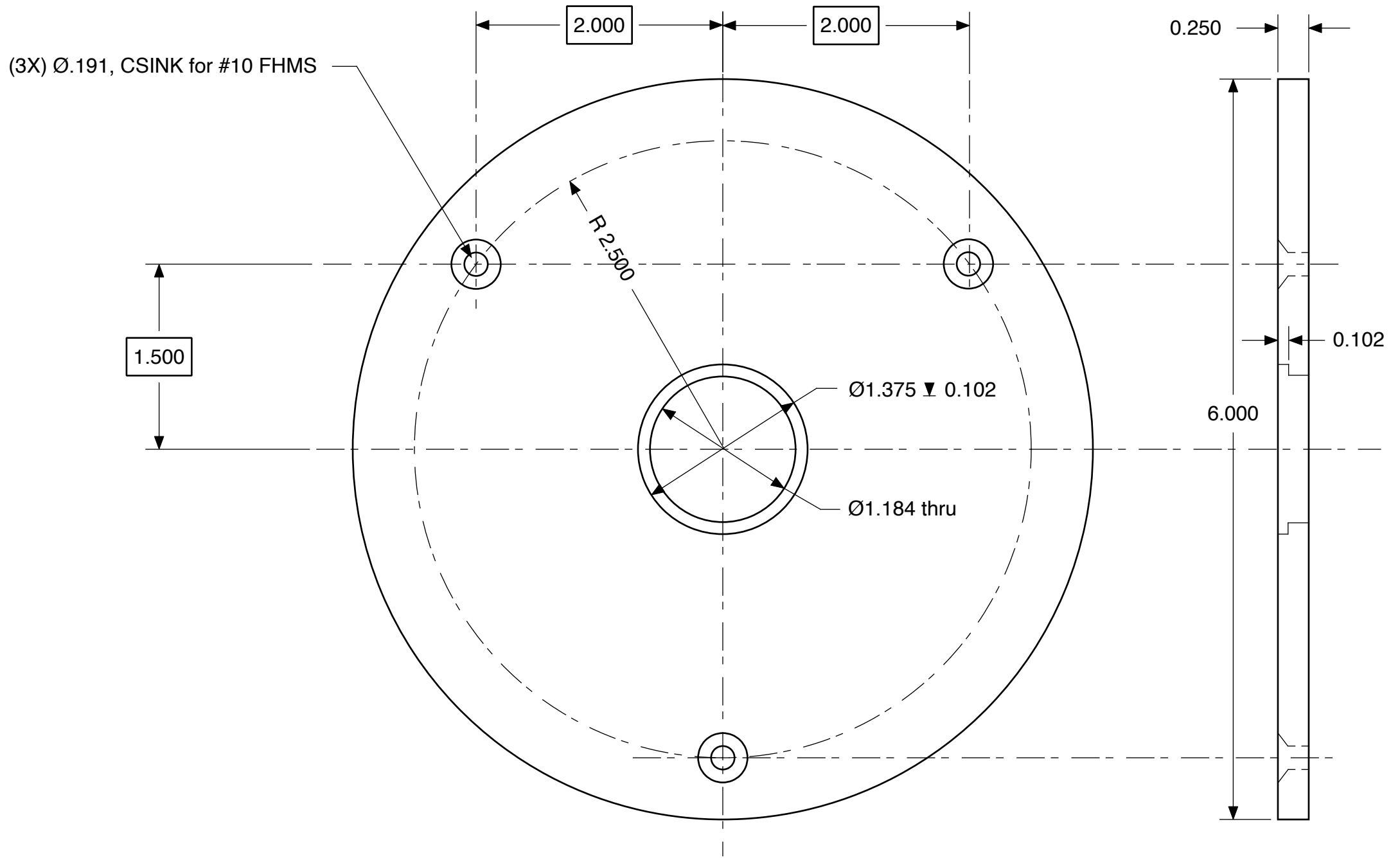
Mtl: 6061-T6 plate .75 x 3.25 x 6.75  
 Finish: Clear lacquer

**Mini Plunge Router Base  
 Top Plate  
 GWJ 3-30-25**



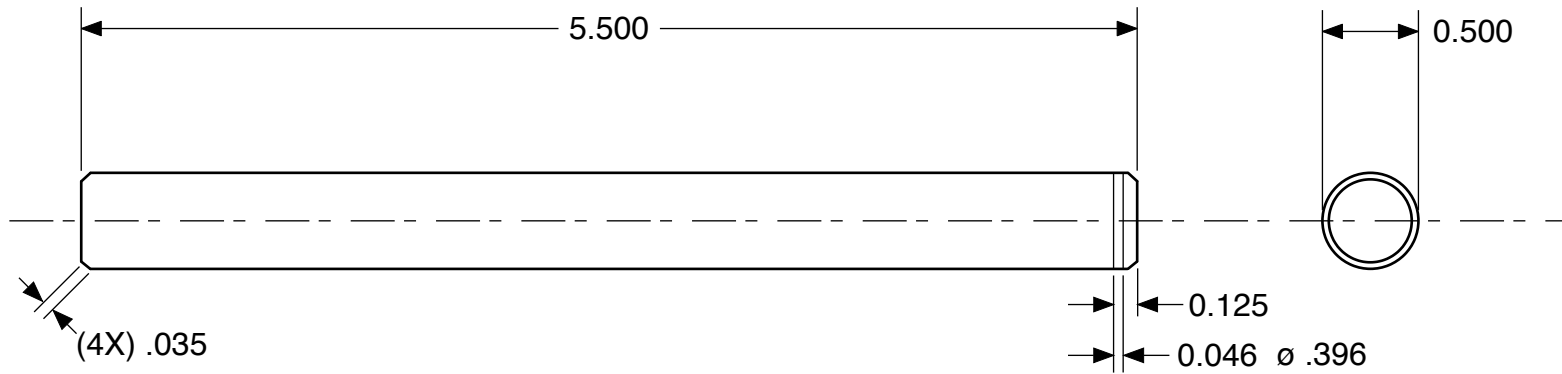
Mtl: 6061-T6 plate 0.625 x 6 x 6  
 Finish: Clear lacquer

**Mini Plunge Router Base  
 Base Plate  
 GWJ 3-30-25**



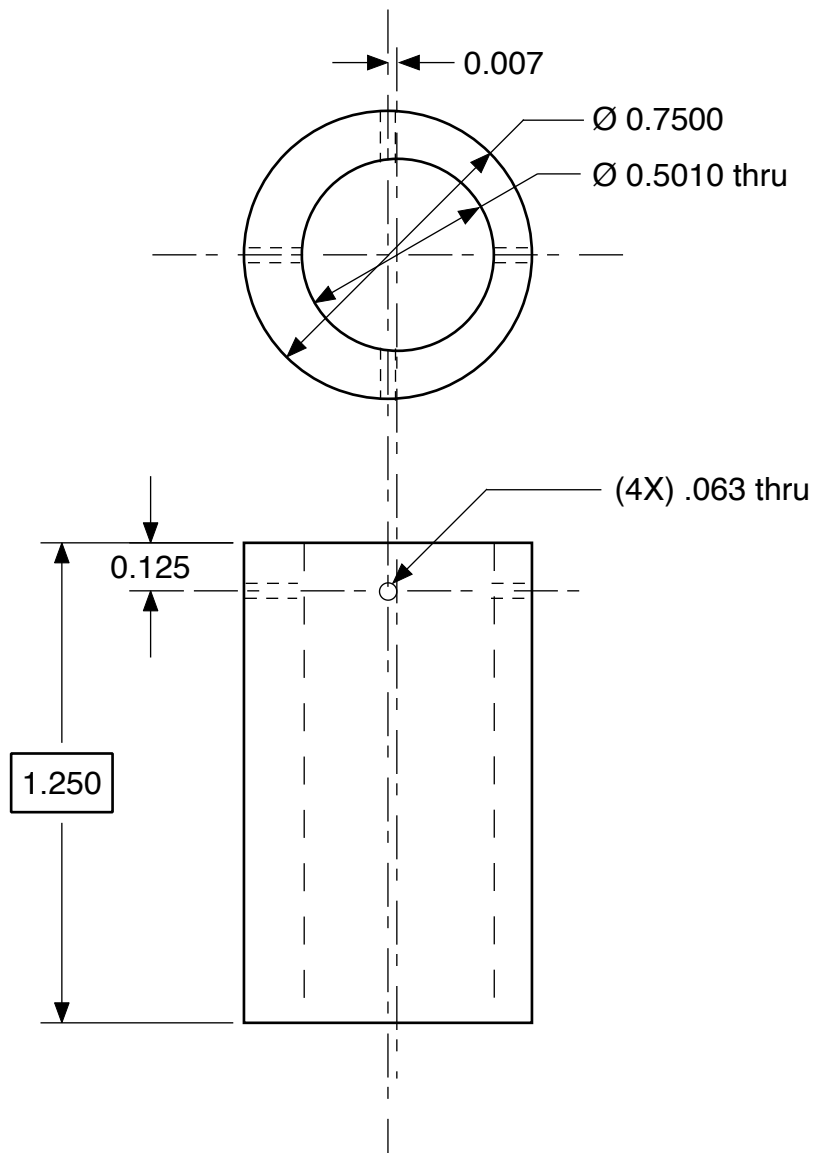
Mtl: 0.25 Polycarbonate, clear

**Mini Plunge Router Base  
Plastic Base,  
Recess for Standard Guides  
GWJ 3-30-25**



Mtl: O1 Drill rod, 0.500  
Finish: Polished. Blued.  
2 req'd

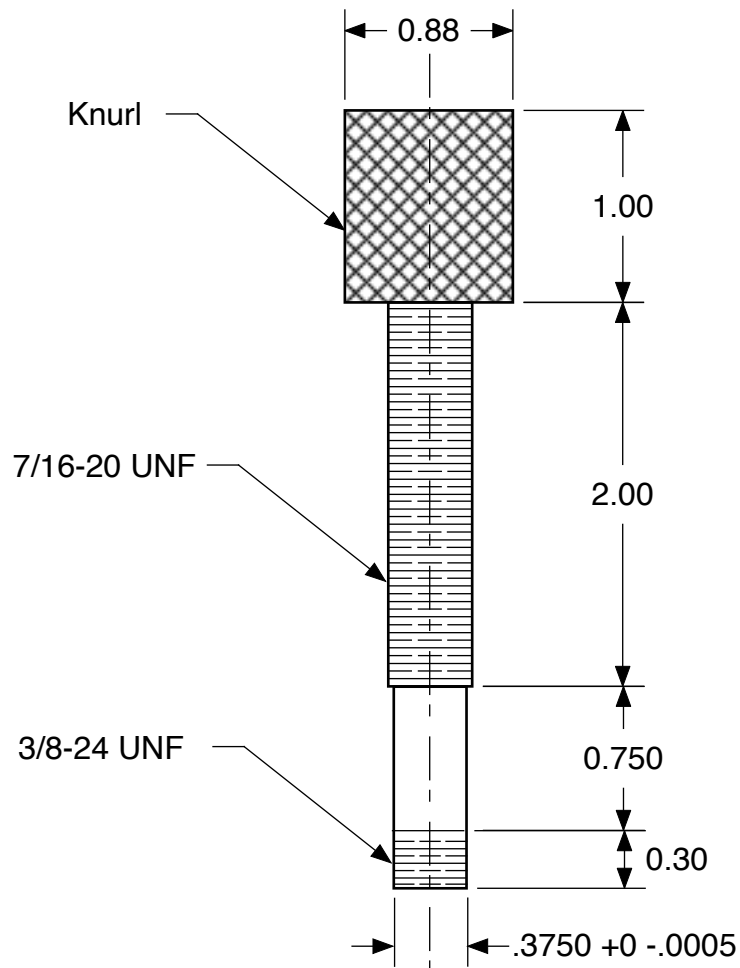
**Mini Plunge Router Base  
Guide Rod  
GWJ 3-30-25**



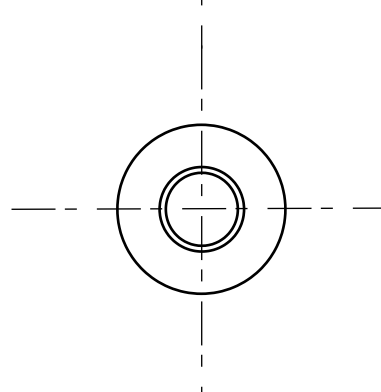
Mtl: 360 brass

**Mini Plunge Router Base  
Eccentric Bearing  
GWJ 3-30-25**

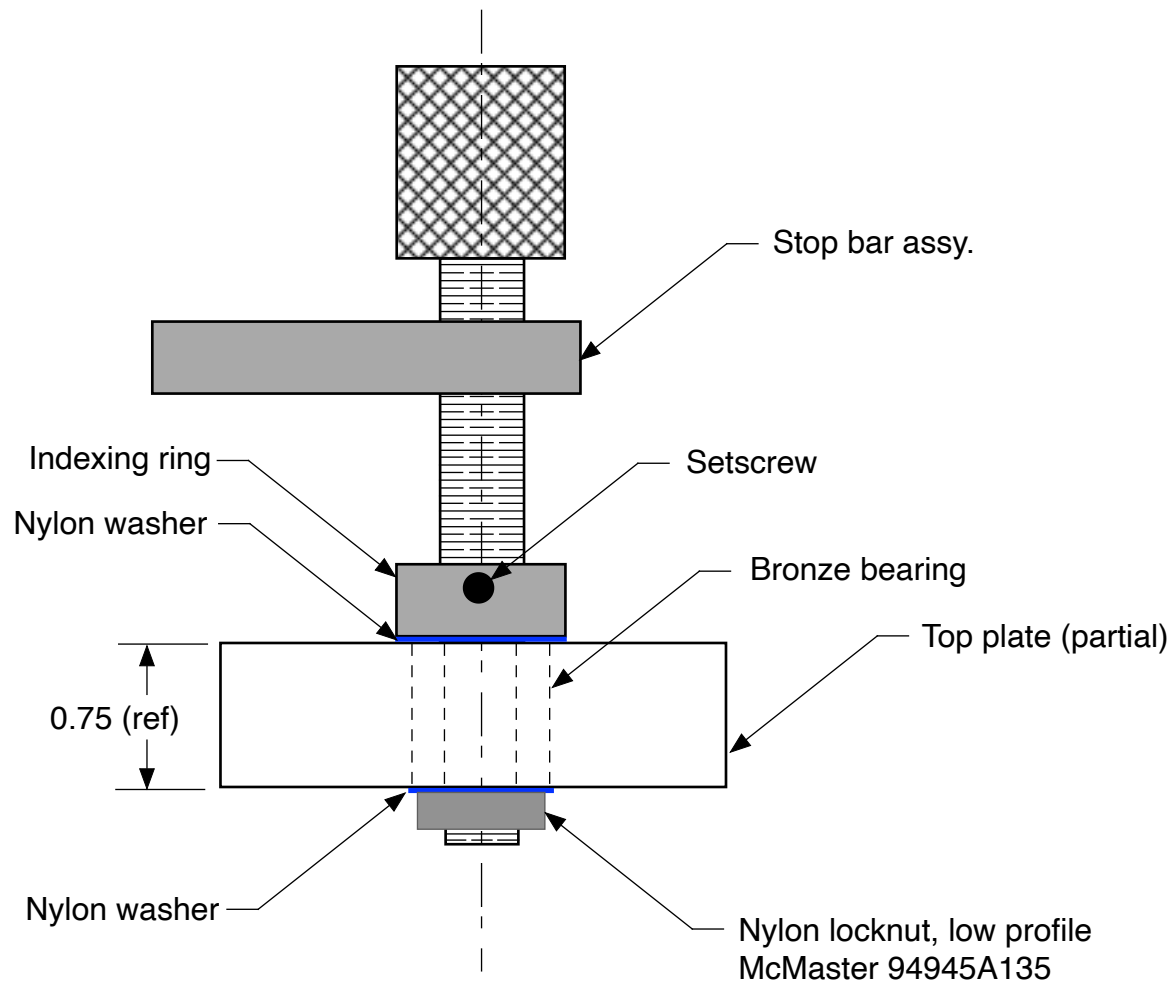




Mtl: Rod, CRS  
Finish: Blued



**Mini Plunge Router Base  
Stop Adjustment Screw  
GWJ 3-30-25**

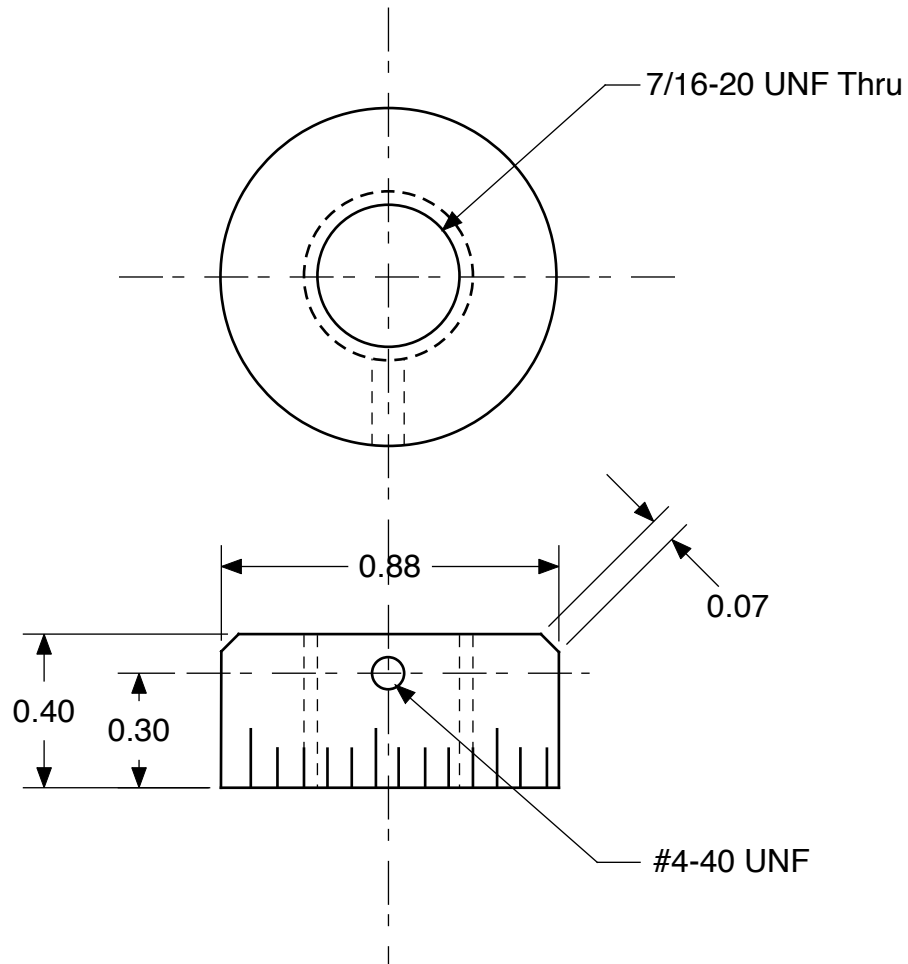


Notes:

1. Adjust nylon locknut for minimum slop, smooth rotation.

**Mini Plunge Router Base  
Stop Adjustment Screw,  
Assembly Detail  
GWJ 3-30-25**

Line #	Angle	Length
0	0	0.15
1	14.4	0.1
2	28.8	0.1
3	43.2	0.1
4	57.6	0.1
5	72.0	0.15
6	86.4	0.1
7	100.8	0.1
8	115.2	0.1
9	129.6	0.1
10	144.0	0.15
11	158.4	0.1
12	172.8	0.1
13	187.2	0.1
14	201.6	0.1
15	216.0	0.15
16	230.4	0.1
17	244.8	0.1
18	259.2	0.1
19	273.6	0.1
20	288.0	0.15
21	302.4	0.1
22	316.8	0.1
23	331.2	0.1
24	345.6	0.1

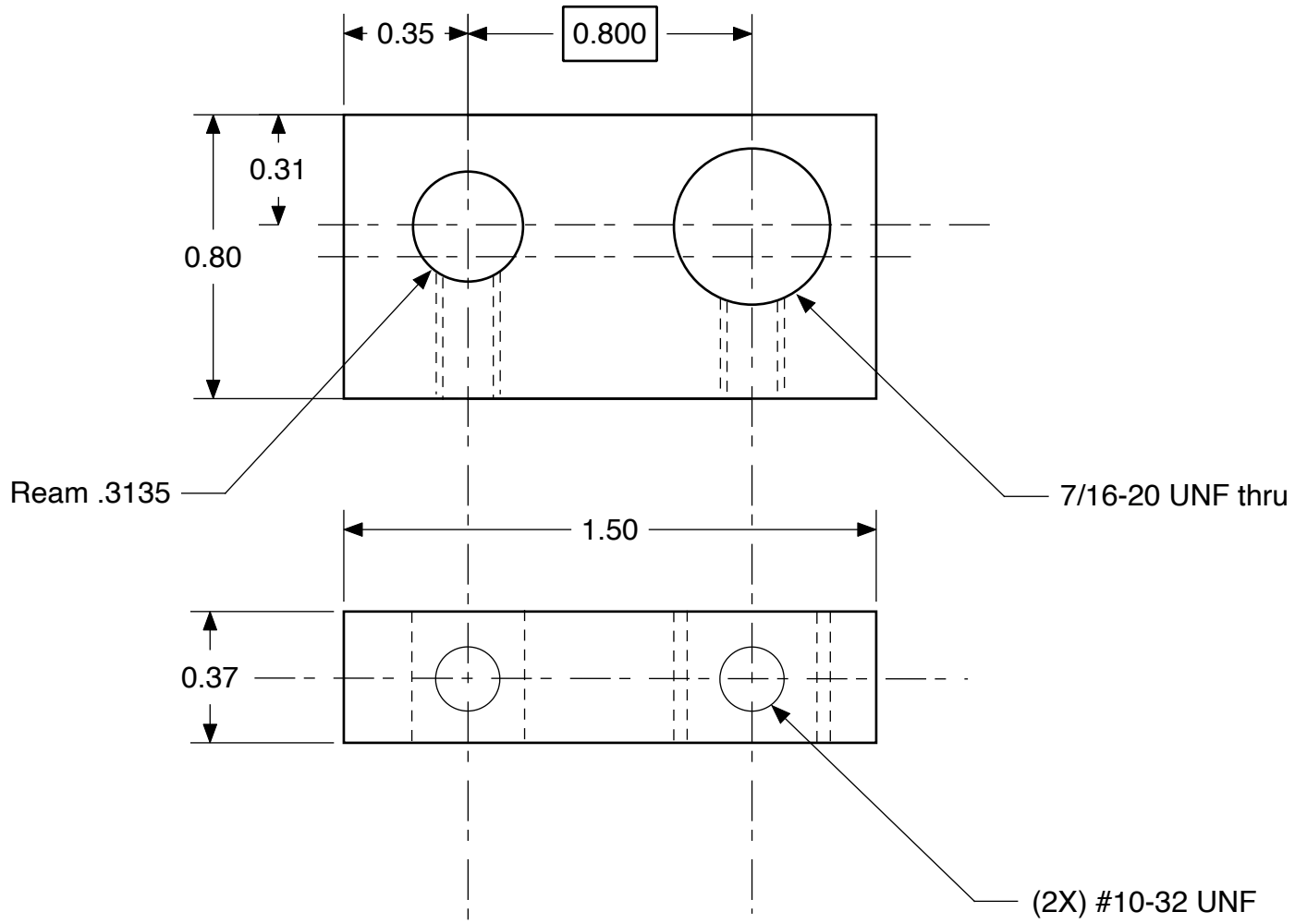


Mtl: 6061-T6

**Notes:**

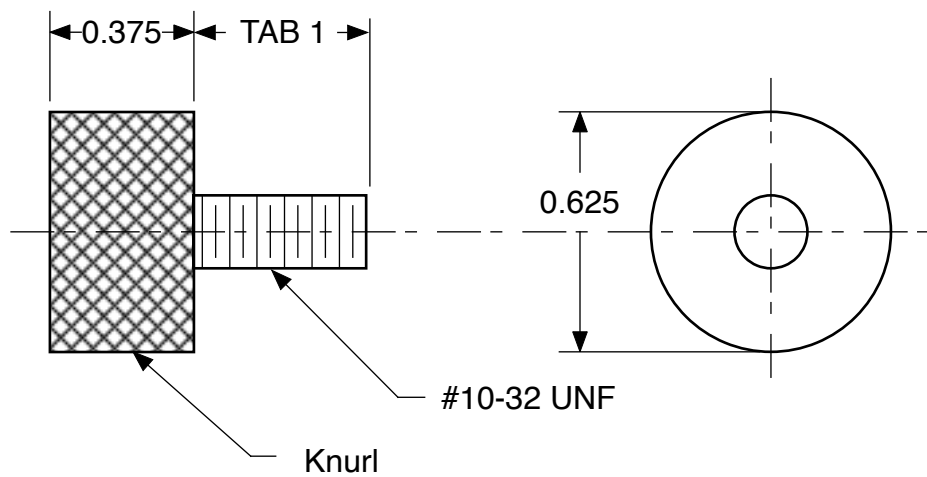
1. Etch 25 equally-spaced indicator lines around circumference per table (.002" advance per line).

**Mini Plunge Router Base  
Indexing Ring  
GWJ 3-10-25**



Mtl: Plate, 6061-T6

**Mini Plunge Router Base  
Stop Bar  
GWJ 3-30-25**

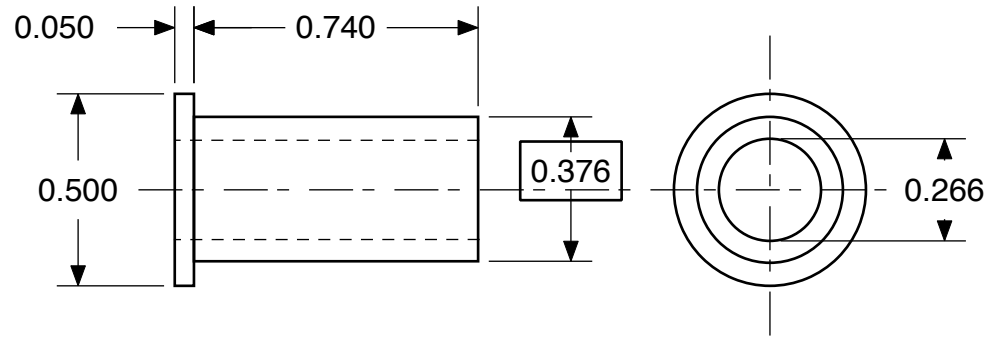


TAB 1	
QUAN	LENGTH
1	.45
1	.51

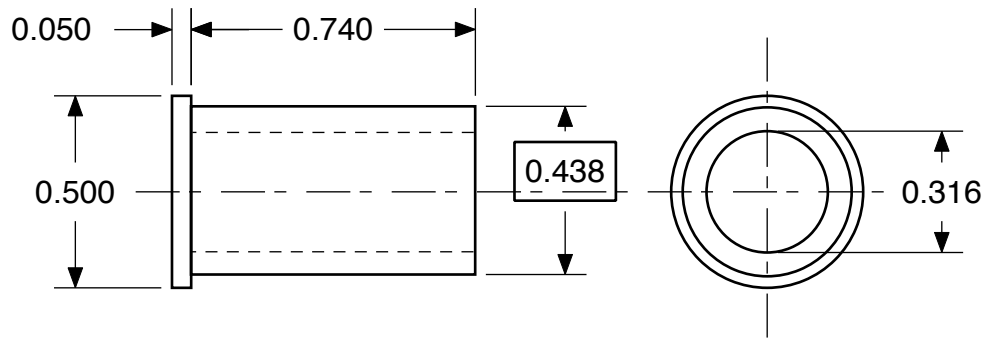
Mtl: 360 brass

Mini Plunge Router Base  
 Stop Bar Lock Screws  
 GWJ 3-10-25

### Bushing, upward stop rod

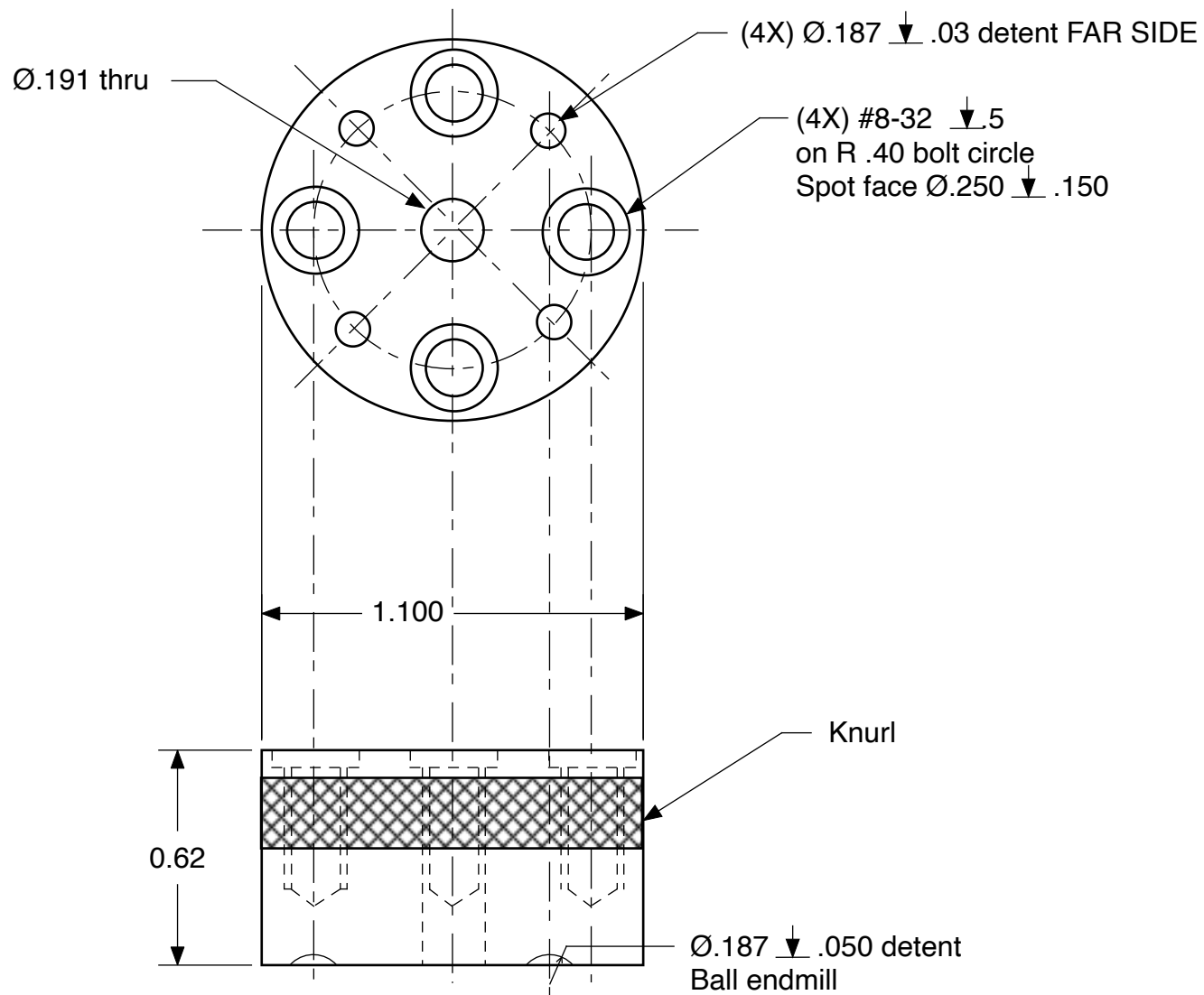


### Bushing, depth rod



Mtl: Acetal

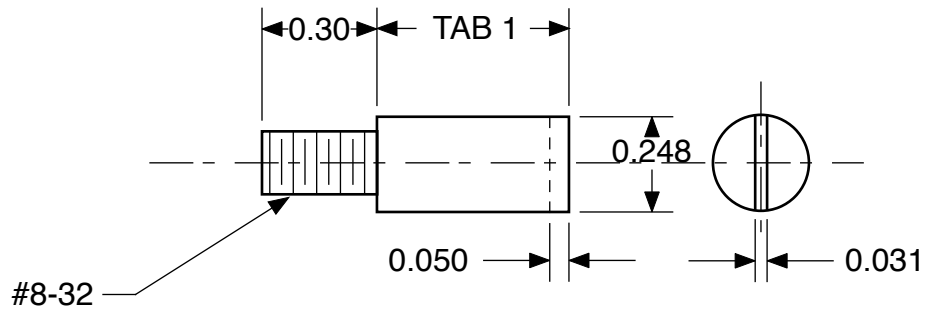
**Mini Plunge Router Base  
Nylon Bushings  
GWJ 3-30-25**



Mtl: 6061-T6

Bottom washer: 0.005 brass,  $\text{Ø}0.55$  OD,  $\text{Ø}0.195$  ID  
 Top washer: 0.063 nylon 6,  $\text{Ø}0.375$  OD,  $\text{Ø}0.195$  ID

**Mini Plunge Router Base**  
**Depth Turret**  
**GWJ 3-30-25**



**TAB 1**

<u>QUAN</u>	<u>LENGTH</u>
1	.300
1	.425
1	.550
1	.675

Mtl: O1 drill rod, Ø.250  
 Finish: Blued

**Mini Plunge Router Base  
 Shoulder Bolts for Depth Turret  
 GWJ 3-30-25**